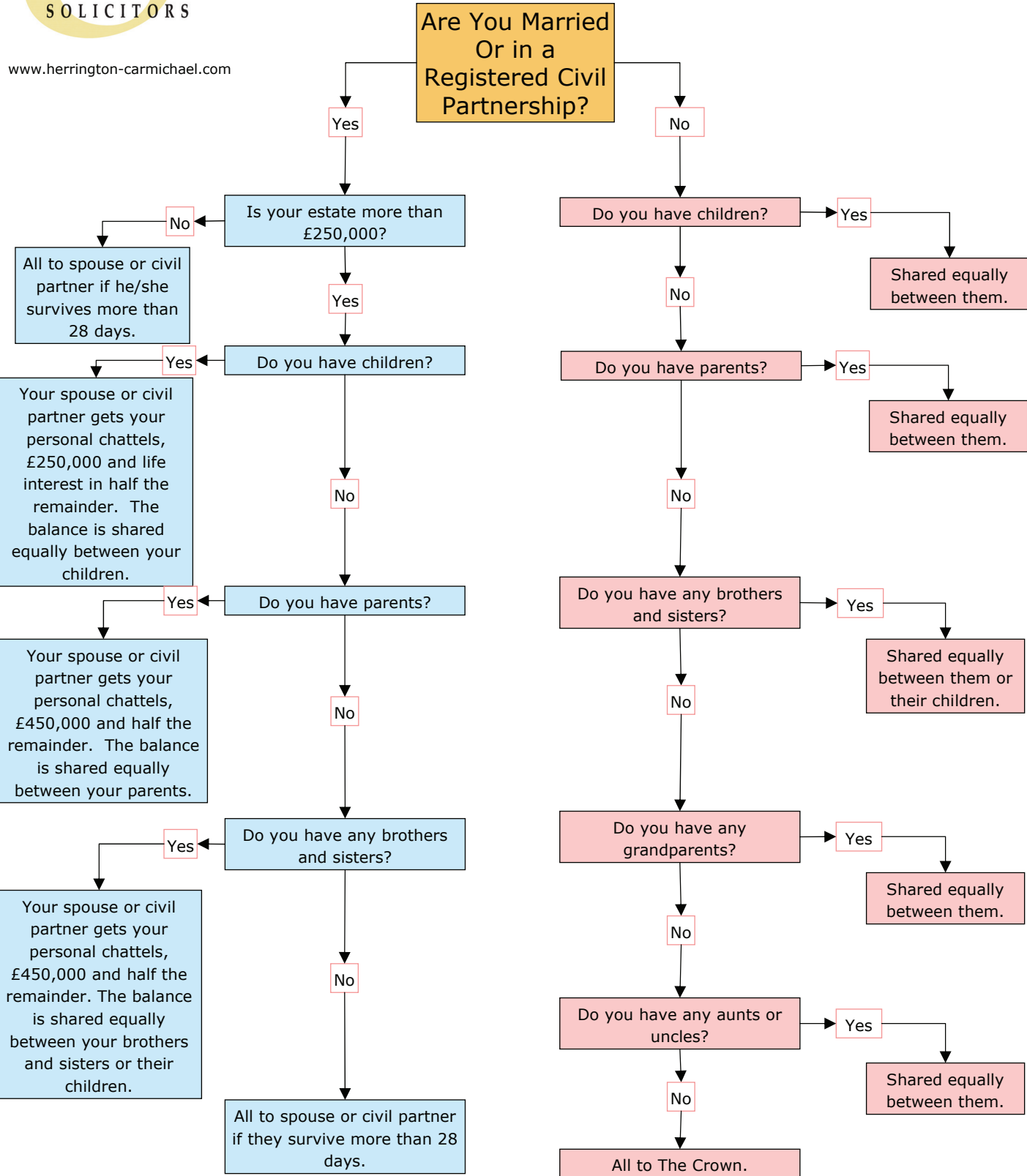


# What happens to your assets if you die without leaving a valid Will?

## The Rules of Intestacy



It should be noted that these rules on intestacy do not recognise "common law" partners and that "children" includes natural, adopted and illegitimate children, but excludes step-children. The figures apply to all deaths after February 1<sup>st</sup> 2009  
This is a simplified illustration of the Rules and is for guidance only.

**“Plain speaking legal advice”**™